





REVISIONS			
REV	DESCRIPTION	DATE	APPROVED
A	INITIAL RELEASE	06OCT20	A.CATAPANG
B	CHANGES AS PER ECR-104095	12JAN22	A.CATAPANG
C	CHANGES AS PER ECR-108713	06JUN22	A.CATAPANG

SPECIFICATIONS:

ROHS COMPLIANCE NOTE: HOMOGENOUS MATERIALS IN THIS BOARD SHALL BE COMPLIANT  
THE EU RoHS DIRECTIVE 2002/95/EC

MATERIALS; ALL LAMINATES AND BONDING MATERIALS SHOULD BE SELECTED FROM  
IPC-4101 OR IPC-4103, MINIMUM Tg>170degC, Td>300degC,  
U.L. RATING OF 94 V-0

MATERIAL FAMILY: ISOLA370HR OR S1000-2 OR IT180 OR EQUIVALENT.

CLADDING;	EXTERNAL LAYERS .5 OZ. COPPER, OVERPLATE TO 1.5 OZ.
	INTERNAL SIGNAL LAYERS .5 OZ. COPPER.
	INTERNAL PLANE LAYERS 1 OZ. COPPER.

NOTE: IF THE LAYER STACKUP CONFLICTS WITH THE ABOVE  
CLADDING SPECIFICATIONS THEN THE LAYER STACKUP SHALL  
TAKE PRECEDENCE.

SOLDER MASK; SHALL BE LIQUID PHOTOIMAGEABLE (LPI) APPLIED ON BOTH SIDES  
OVER BARE COPPER OR GOLD AND SHALL MEET IPC-SM-840  
(LATEST REV.) CLASS 3. COLOR GREEN.

SILK SCREEN; SHALL BE PERMANENT NON-CONDUCTIVE EPOXY INK, COLOR: WHITE  
SYNTHETIC INKJET PRINTING ALLOWED FOR DENSE BOARDS,  
COLOR: WHITE

SURFACE FINISH: ENIG (ELECTROLESS NICKEL/IMMERSION GOLD)  
PER IPC-4552 LATEST REVISION

INTENTIONAL SHORTS: IF SUPPLIED DATA INCLUDES A FILE "READ\_ME.2", THEN  
INTENTIONAL NET SHORTS EXIST. CUSTOMER REVIEW AND APPROVAL  
IS REQUIRED IF SUPPLIED DATA REPORTS ANY CONDITION THAT  
DOES NOT MATCH "READ\_ME.2" FILE PROVIDED.

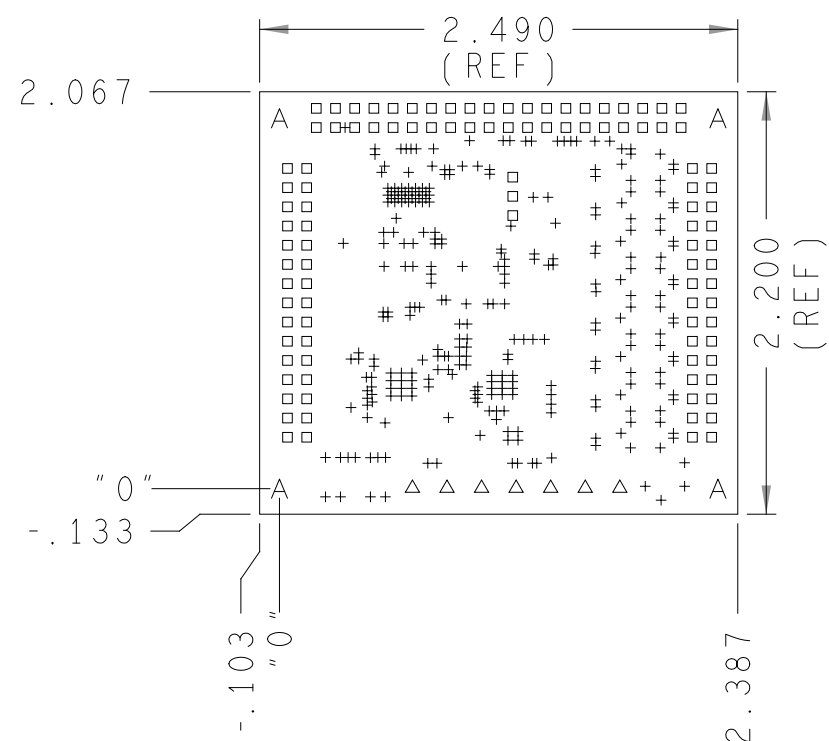
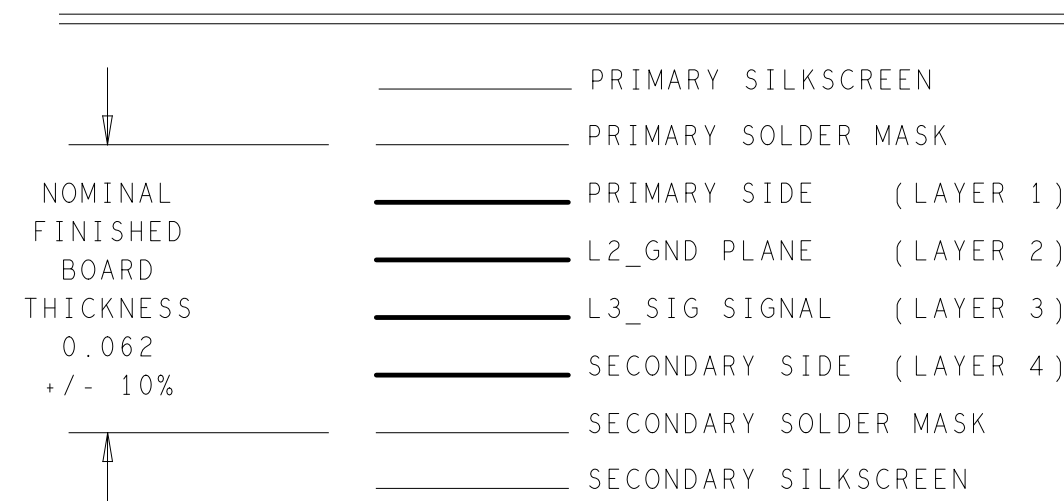
TEST REQUIREMENTS; 100% NETLIST ELECTRICAL VERIFICATION USING CUSTOMER SUPPLIED IPC-D-356 NETLIST FOR OPENS AND SHORTS WHEN "GERBER DATA" IS PROVIDED. THIS VERIFICATION ALSO REQUIRED FOR "ODB++" DATA PER EMBEDDED NETLIST.

## HOLE TOLERANCE


UNLESS SPECIFIED  
PLATED: +/- 3MILS  
NON PLATED: +/- 2MILS

DRILL CHART: TOP to BOTTOM				
ALL UNITS ARE IN MILS				
FIGURE	SIZE	PLATED	QTY	TOLERANCE/NOTES
+	10.0	PLATED	295	DIA MAX
□	45.0	PLATED	103	
△	63.0	PLATED	7	
A	125.0	NON-PLATED	4	

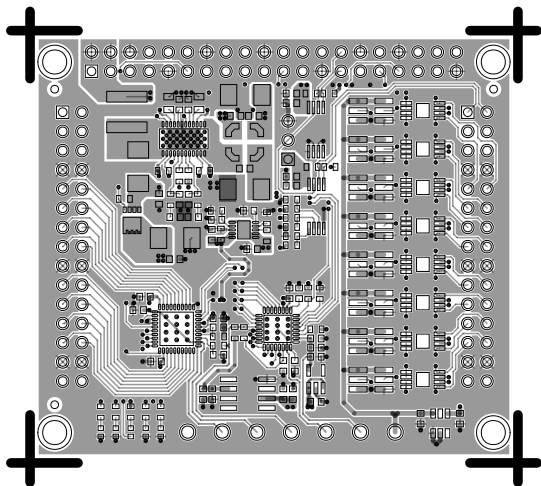
## 4 LAYER STACKUP



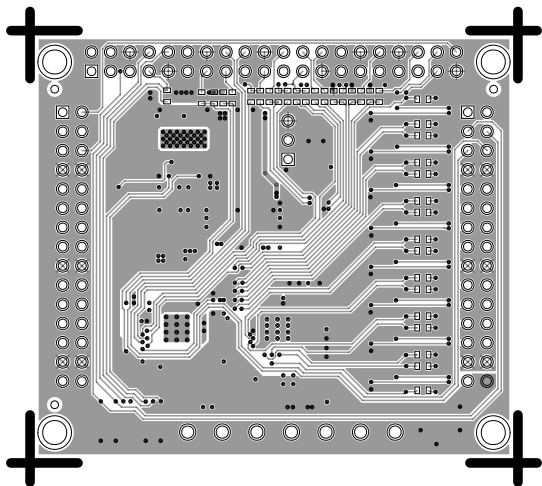
## PRIMARY SIDE

UNLESS OTHERWISE SPECIFIED DIMENSIONS ARE IN INCHES  TOLERANCES DECIMALS   FRACTIONS   ANGLES .XX   +- .010   +- 1/32   +- 2 .XXX   +- .005 .XXXX   +- .0050	APPROVAL	DATE	<div>ANALOG DEVICES</div> <div>WWM DIVISION 804 WOBURN STREET WILMINGTON, MA 01887</div>				
	TEMPLATE ENGINEER						
	HARDWARE SERVICES M. VALE	06OCT20					
	HARDWARE SYSTEMS						
MATERIAL	TEST ENGINEER		TITLE  FABRICATION  EVAL - CN0554 - RPIZ DATA AQUISITION BOARD Z				
	COMPONENT ENGINEER A. GIRON	06JUN22					
	TEST PROCESS						
	HARDWARE RELEASE K. JABATAN	06OCT20					
FINISH	DESIGNER G. GARCIA	06OCT20	SIZE	FSCM NO	DRAWING NUMBER	REV	
	PTD ENGINEER A. CATAPANG	06OCT20					
	CHECKER						
DO NOT SCALE DWG			SCALE	1 / 1		SHEET   1 OF 1	

L1 PRIMARY  
08-065573-01  
REV C



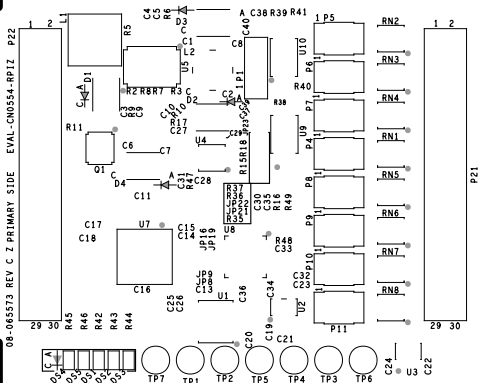
L4 SECONDARY  
08-065573-02  
REV C



# SILKSCREEN PRIMARY

08-065573-03

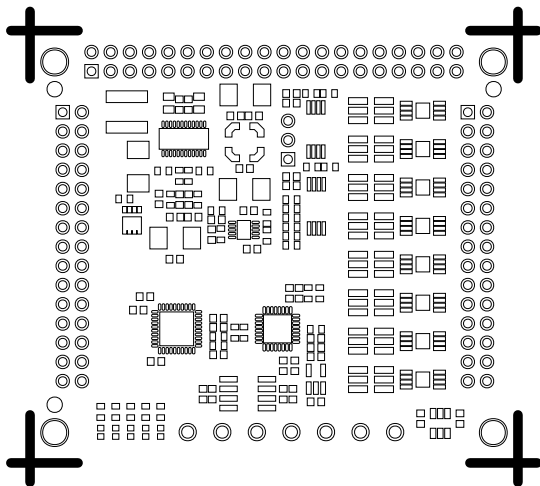
REV C



SOLDERMASK PRIMARY

08-065573-04

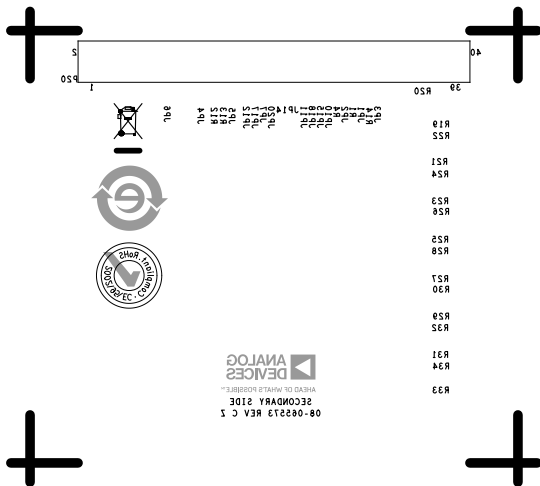
REV C



# SILKSCREEN SECONDARY

08-065573-05

REV C

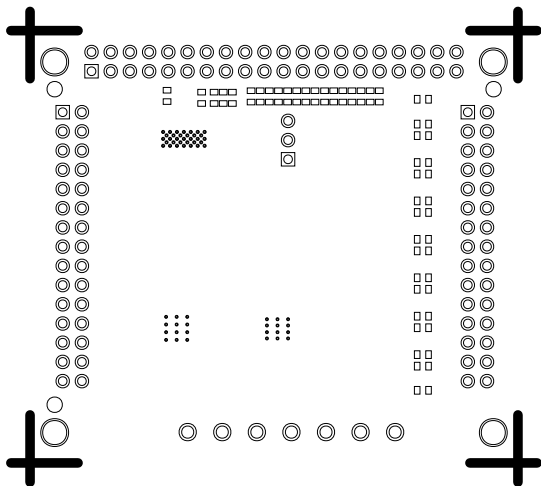




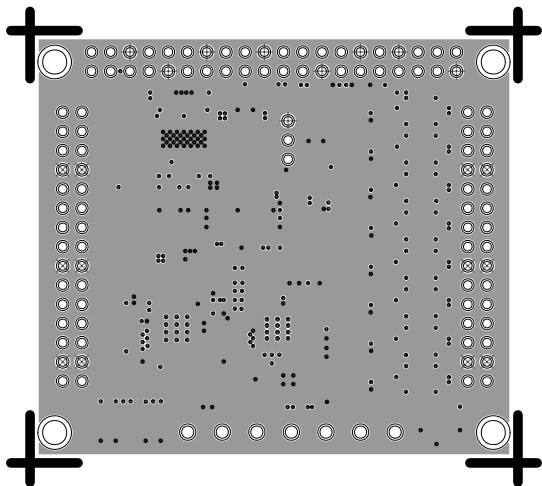
SOLDERMASK SECONDARY

08-065573-06

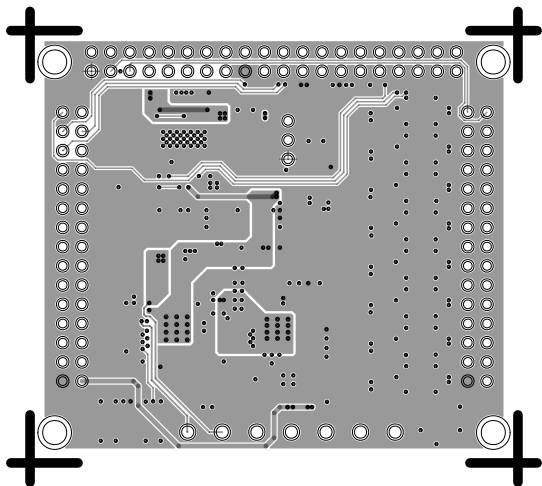
REV C



L2 GND  
08-065573-07  
REV C



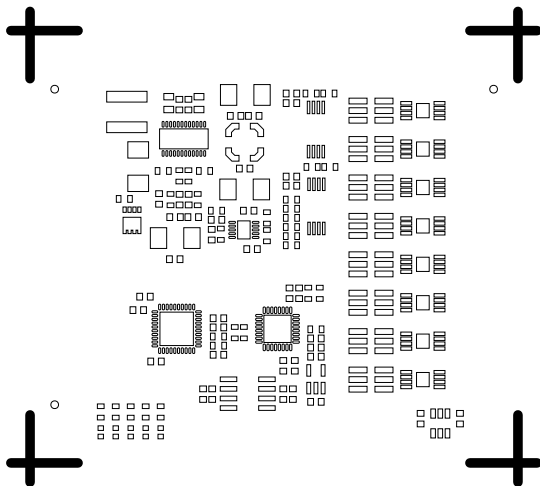
L3 SIG  
08-065573-08  
REV C



PASTEMASK PRIMARY

08-065573-09

REV C



PASTEMASK SECONDARY

08-065573-10

REV C

